



Delta 1st

IX90

Set Up Guide



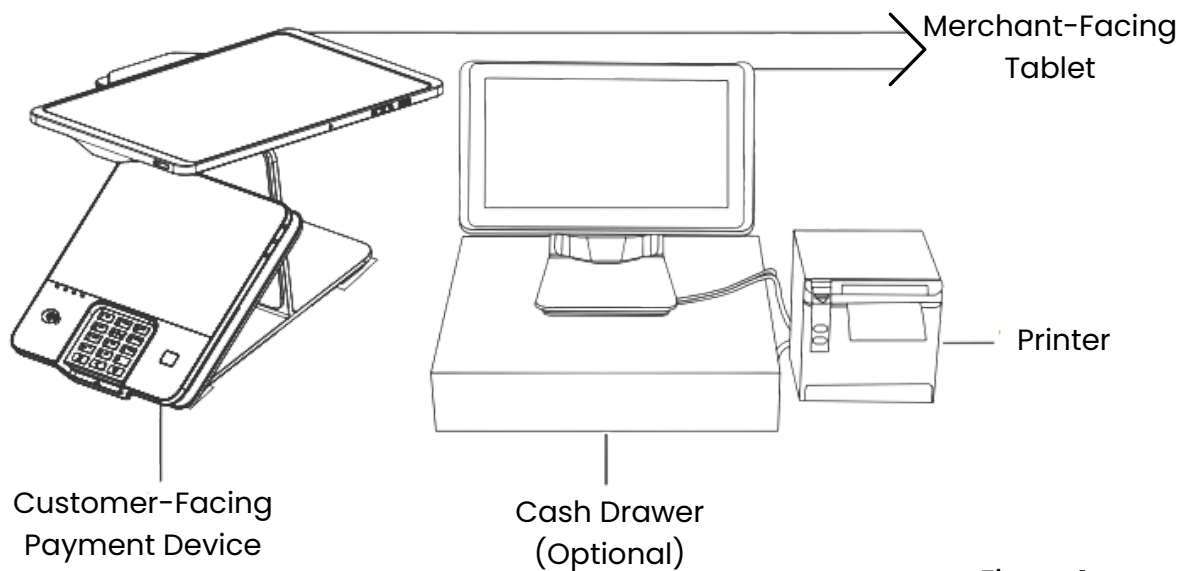
# Introduction



Let's get started! At Woodforest Acceptance Solutions, we aren't just here to process your transactions, we are on a mission to elevate your business and grow with you. Refer to this guide for detailed instructions on how to set up your new IX90 device and start taking payments today!

**Need help setting up?** Our dedicated support team is here to help you every step of the way. Contact us any time at (888) 584-2265 with questions or expert assistance in activating your device.

# Overview



*Figure 1*



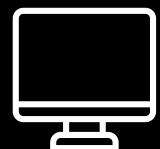
## Steps to Follow to Assemble Completed Set Up (Figure 1):

1 - Unbox  
Equipment

2 - Connect all  
Devices to Cable  
Hub and a Power  
Source

3 - Set up Payment  
Device

4 - Set up Tablet

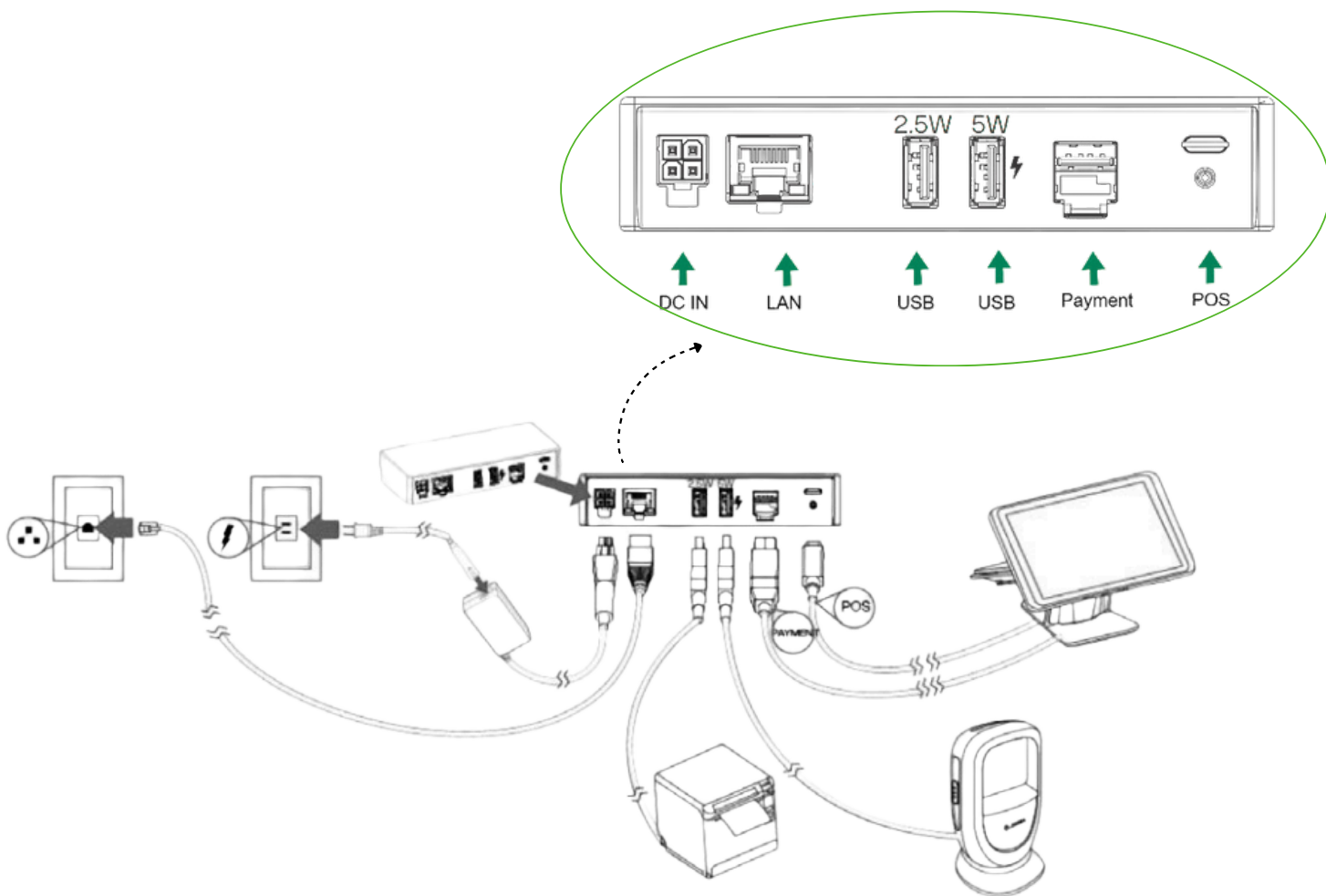


# 1. Unbox Equipment



## A. Start Unpacking the Gear

1. Open the shipping box and lift out the box with handles.
2. The box with handles contains the tablet, and two smaller boxes:
  - a. One box has a Cable Hub to connect all the cables.
  - b. The other box has Payment Device accessories and an optional Ethernet (LAN) cable.

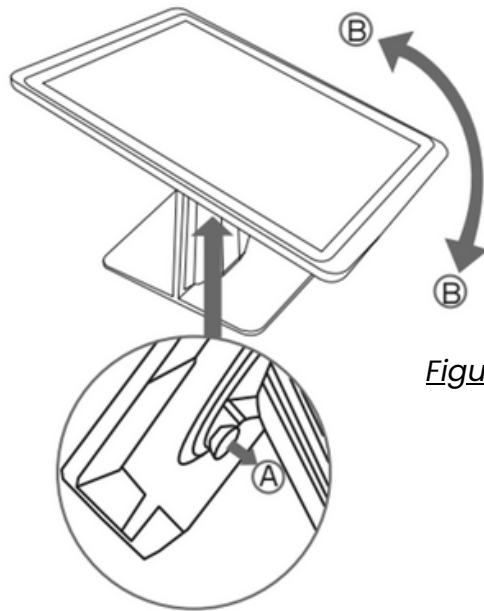


*Figure 2*

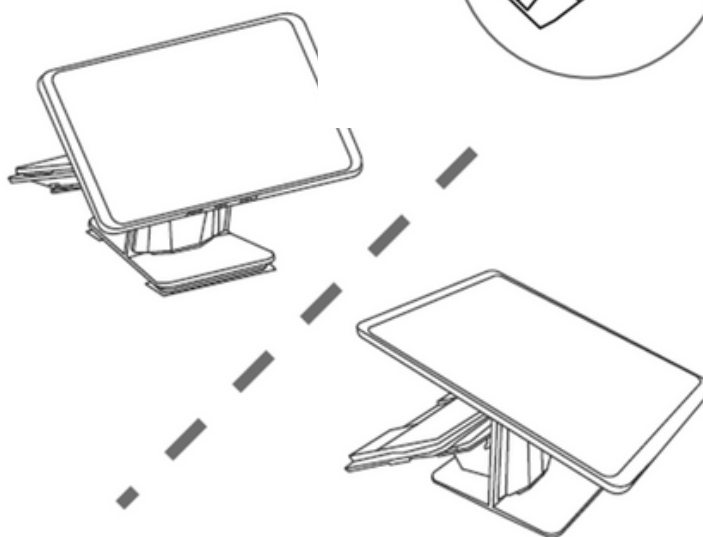


## B. Set Preferred Orientation of Tablet

1. Set the IX90 on a stable countertop.
2. Set the preferred orientation. The merchant facing display can be used in both portrait and landscape mode.
3. To change the orientation, pull on the pin located at the back of the tablet (Figure 3A) and rotate it counterclockwise (Figure 3B).



*Figure 3A*



*Figure 3B*

## 2. Connect All Devices to Cable Hub and Power Outlet



### A. Connect Tablet and Payment Device to Cable Hub

1. The tablet will have two cables connected to it. Plug in the Tablet's cables to the Cable Hub.
2. Connect the two-piece "DC IN" power cable to the Cable Hub and an outlet.

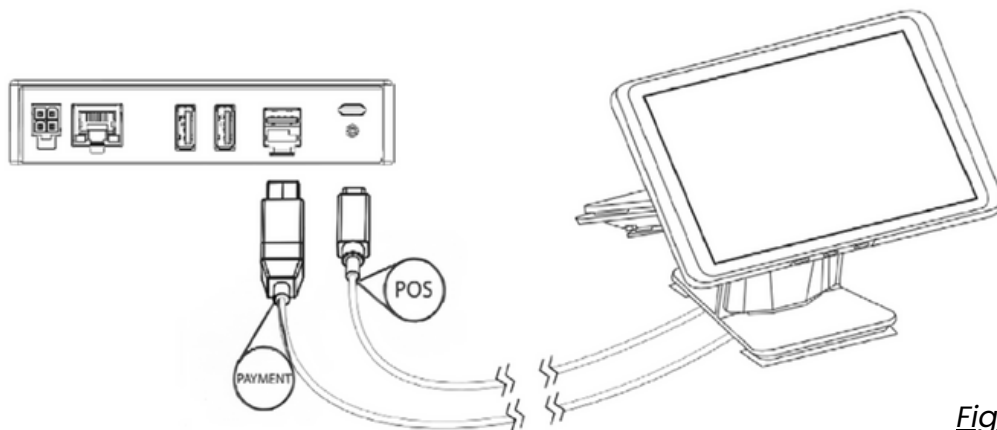


Figure 4

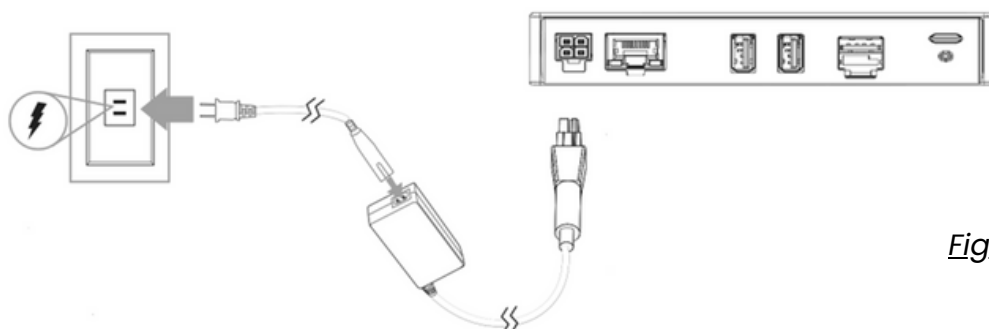


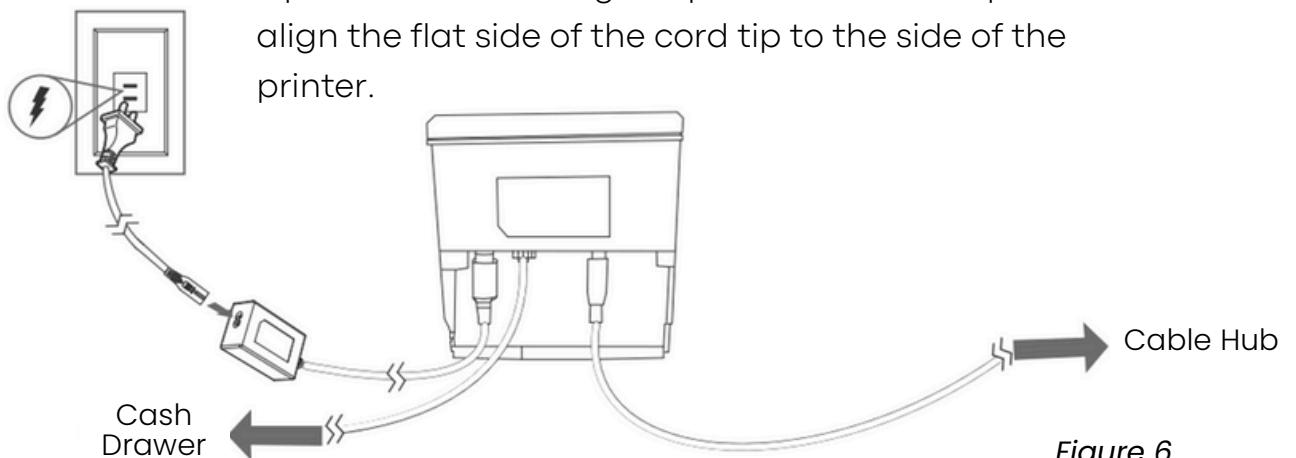
Figure 5



## B. Install Printer

1. Remove the back cover of the Printer labeled "Verifone."  
This may require a bit of force.
2. Connect USB-B cable from the Printer to the USB-A port of the Cable Hub.
3. Connect the two-piece power cord from the Printer to an outlet.

a. Tip: When connecting the power cord to the printer, align the flat side of the cord tip to the side of the printer.

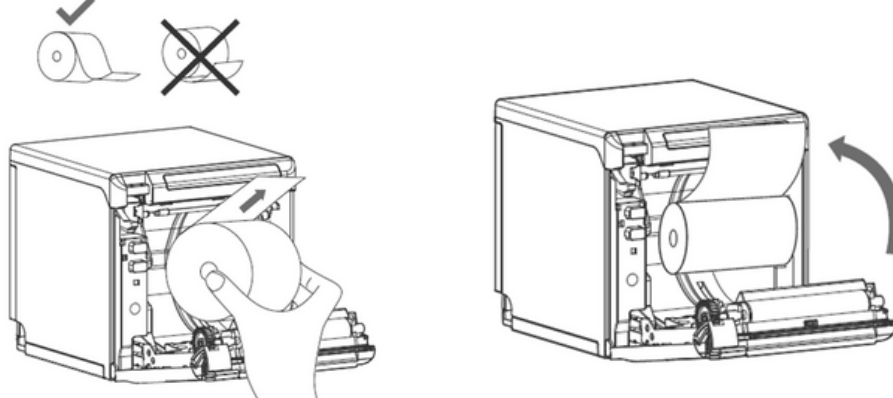


*Figure 6*



## C. Load Paper in Printer

1. Open the paper door of the printer by pulling downwards on the blue tab in the top left corner.
2. Place the paper roll inside. Make sure the paper is coming from the top of the roll, not from the bottom.
3. Align the printer paper to the tabs on the paper guides.  
Hold the paper up while closing the door to ensure proper alignment.



*Figure 7*

# 3. Set Up Payment Device




## A. Set Up WiFi and Device ID on Payment Device

1. Power on the Printer by pressing and holding the power button until it beeps.
2. Power on the Tablet by pressing and holding the power button until it turns on.
3. Select a language on the Payment Device.
  - a. Connect to Wi-Fi by entering a password. OR connect the optional Ethernet cable from Cable Hub to Internet Router.
4. Enter the Device ID on the Payment Device.
  - a. You can find the Device ID in your email from Verifone or on the packing slip attached to the box. To locate it, remove the packing slip from the plastic wrap and look at the bottom left under 'Remarks' for a 16-digit number. This is your Device ID.
  - b. After entering the Device ID, the device will begin a series of downloads, which can take up to 30 minutes. Please ensure the device remains on and connected to the internet until the process is complete.

# 4. Set Up Tablet




## A. Set Up Wi-Fi & Google Account on Tablet

1. While the Payment Device is updating the software, select a language on the Tablet and click Start.
2. Connect to the same Wi-Fi as the Payment Device.
  - a. Note: To access the keyboard, click on the keyboard  icon at the bottom right corner and toggle on "Show virtual keyboard".
3. When asked "Copy Apps & Data?", click on "Don't Copy" at the bottom left corner.
4. Sign into an existing Google account or create a new one.
  - a. Read Google's Terms and Services and choose "I agree" to move forward.
  - b. Follow Google's Prompts and choose Accept to move forward.
5. Set a PIN or press Skip on the bottom left-hand corner.
6. You will be asked to Set up Google Assistant. Choose "Continue" or "No thanks".
7. When asked to select a home app, select "Quickstep."
8. Swipe up on the screen and delete all three pre-installed Delta applications on the device.
  - a. Tip: Hold down on the app, drag it upwards and drop it on the trash can icon.

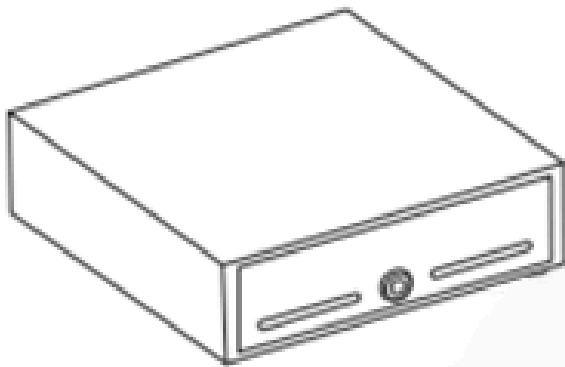


## B. Download Delta1st POS App

1. Go to the Play Store app  and search "Delta1st POS".
2. Install the appropriate industry: Food/Retail/Service (PP) and open the app.
3. Open the downloaded app.
4. Click "Allow photos" and "Ok" for permission to access.
5. Enter the Subdomain from your Delta1st Welcome Email.
6. Login with username and password from your Delta1st Welcome Email.
7. Pair the Tablet to the Payment Device by entering the IP address from the Payment Device.
  - a. On the Payment Device, swipe down on the screen and hold onto the Wi-Fi icon.
  - b. Tap on the network name that is connected to navigate to the network's information page.
  - c. Note the IP address on the bottom of the screen.
8. Type the IP Address into the Tablet and press Pair.

# Extra / Optional Equipment

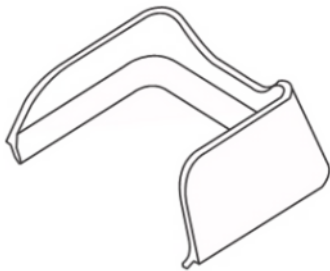
↙ The following steps are for those who added on the OPTIONAL equipment to their order.



Cash Drawer



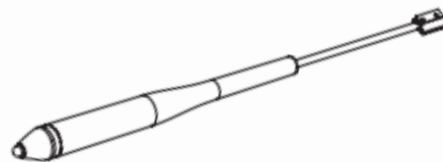
Bar Code Scanner



PIN Pad Cover



Stylus Adapter



Stylus

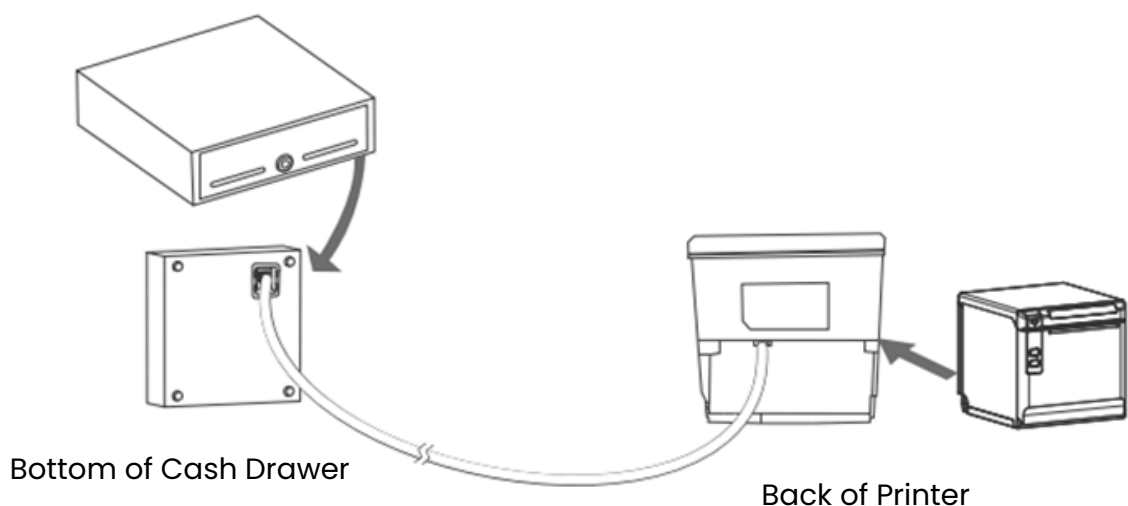
# Extra: Cash Drawer



A. The connection port of the cash drawer is on the bottom of the cash drawer.

B. The Cash Drawer cable will be labeled "Printer" on one end and "Cash Drawer" on the other.

C. Connect the end of the cable labeled "Cash Drawer" to the Cash Drawer and the other end labeled "Printer" to the Printer.

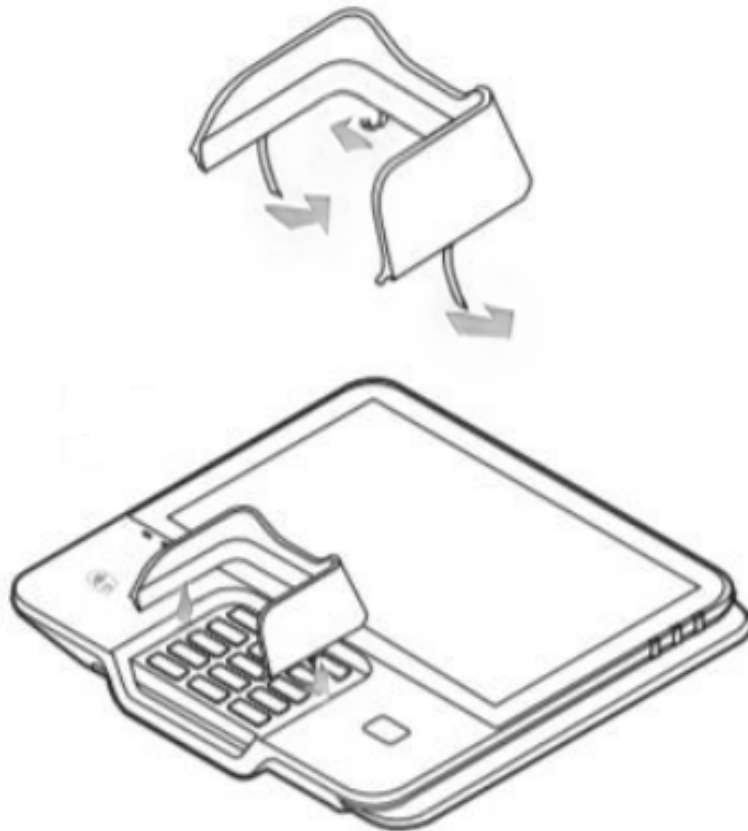


*Figure 8*

## Extra: PIN Pad Cover



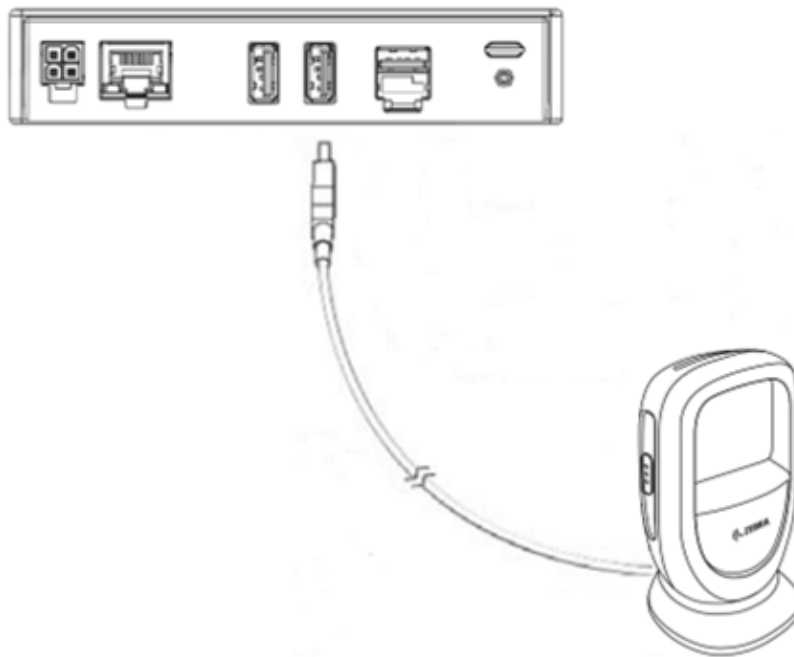
- A. Remove plastic film to reveal the adhesive.
- B. Place the optional PIN pad cover on the PIN pad and push down.



*Figure 9*

# Extra: Bar Code Scanner

- ↙ A. Plug Barcode Scanner into Cable Hub (Figure 10).
- B. To activate the Barcode Scanner, click Create Order in the Delta1st POS app > Top right barcode icon > Scan the barcode below to connect and allow permission (Figure 11).



*Figure 10*



**Symbol Native API (SNAPI) with Imaging Interface**

*Figure 11*

## Extra: Stylus



A. Locate the stylus port on the left side of the payment device.

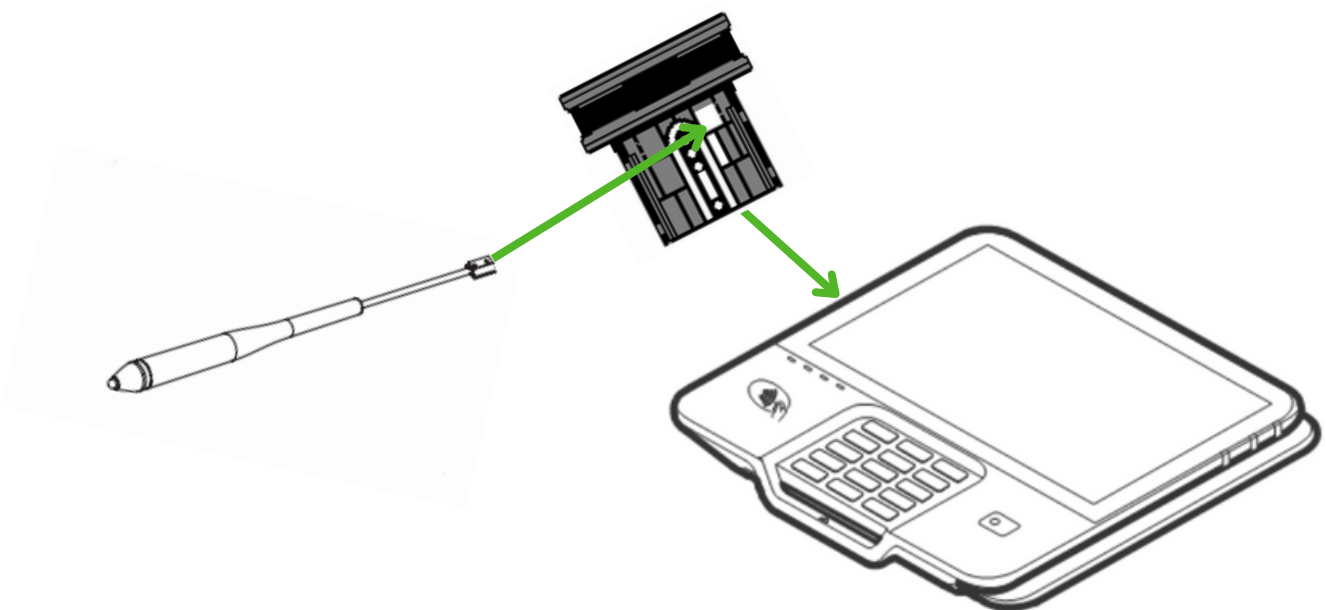
B. Align the stylus with the port and gently push it in until it clicks into place (Figure 12).

C. Using the indentation, pull out the plastic insert.

D. Insert the tip of the stylus cord into the square hole on the stylus adapter.

E. Lay the tip of the stylus cord down flat on the open rectangular hole to the left of the square hole.

F. Align the stylus adapter with the port and gently push it in until it clicks into place.



*Figure 12*

# Time to Grow!



If the above steps are followed correctly, the IX90 device should be ready to use.

For additional support with your setup, or with any other questions you may have during our partnership, please contact Woodforest Acceptance Solutions Support at (888) 584-2265 and select Option 2, or [merchantsupport@woodforestpay.com](mailto:merchantsupport@woodforestpay.com).

Enjoy a modernized solution to not only generate revenue but also manage your business efficiently!